

# 2100

## 6½-Digit USB Digital Multimeter



- **High precision 6½-digit DMM for critical measurements at a 5½-digit price**
- **11 measurement functions cover most commonly measured parameters**
- **Fully specified accuracies on all functions for ISO-compliant results**
- **TMC compliant USB 2.0 interface for use with SCPI test programs**
- **Included PC software utilities for graphing and data sharing in both Microsoft® Word and Excel**
- **Rugged construction for durability in bench/portable applications**
- **Selectable front/rear inputs facilitate bench or rack use**
- **All accessories included for lowest total cost including startup software**
- **CE compliant**

The Model 2100 USB Digital Multimeter is the newest member of Keithley's family of high performance DMMs. Its high accuracy (38ppm), 6½-digit resolution is ideal for critical measurements. The Model 2100 features 11 measurement functions and 8 math functions to easily accommodate the most commonly measured parameters. All accessories, such as USB cable, probes, and software, are included with the Model 2100. With its unique combination of high precision and low total cost of ownership, the Model 2100 is an unbeatable value for R&D engineers, test engineers, scientists, and students making basic precision measurements on the bench and in system applications.

### High Precision, Low Cost

The Model 2100 provides stability, accuracy, and speed at a very low cost. It has 0.0038% 1-year basic DC voltage accuracy on the 10V range and 0.013% 1-year basic resistance accuracy on the 10kΩ range. At 6.5 digits, the Model 2100 delivers 50 triggered rdgs/s via the USB remote interface. At the fast 4.5 digit setting, it reads over 2000 rdgs/s into its 2000 reading internal buffer.

The Model 2100 provides a wide number of measurement ranges and functions:

- DC voltage: 0.1V, 1V, 10V, 100V, and 1000V
- AC voltage: 0.1V, 1V, 10V, 100V, and 750V
- DC current: 10mA, 100mA, 1A, and 3A
- AC current: 1A and 3A
- Two- and four-wire resistance: 100Ω, 1kΩ, 10kΩ, 100kΩ, 1MΩ, 10MΩ, and 100MΩ
- Frequency: From 3Hz to 300kHz
- Period measurement
- Diode measurement
- Programmable A-D converter and filter settings for signal to noise optimization

Additionally, eight mathematical operations can be performed on measurement readings: RATIO, %, Min/Max, NULL, Limits, mX+b, dB, and dBm testing. Microsoft® Office, Word, and Excel add-in tools allow remote storage and recall of the measured values from these applications. A graphing utility enables charting of measurements versus time for trending and noise observations.

TMC compliant USB remote interface enables control from a PC for consistent test/calibration procedure execution and easy re-use of existing SCPI programs, including Agilent Model 34401A command emulation.

### Simple to Use

The Model 2100 can be setup quickly and is very easy to use. It has a high contrast front panel and keypad that are intuitive and user-friendly. An easy to read 5×7 dot matrix, vacuum fluorescent display (VFD) offers three-color annunciators so users can easily distinguish each function symbol by its color.

### Strength and Versatility

With its rugged construction and rubber bumpers, the Model 2100 has the durability to withstand bench, portable, or stacking applications. A sturdy carrying handle facilitates transportability.

1.888.KEITHLEY (U.S. only)

[www.keithley.com](http://www.keithley.com)

**KEITHLEY**

A GREATER MEASURE OF CONFIDENCE

## Ordering Information

2100/120 6½-digit Digital USB Multimeter

### Accessories Supplied

Instruction manual on CD, Specifications, LabVIEW® Driver, Keithley I/O Layer, KI-Tool and KI-Link Add-in (Both Microsoft Word and Excel versions)

Extended warranty, service, and calibration contracts are available

### ACCESSORIES AVAILABLE

#### RACK MOUNT KITS

4299-3	Single Rack Mount Kit
4299-4	Dual Rack Mount Kit
8605	High Performance Modular Test Leads
8606	High Performance Modular Probe Kit

# 6½-Digit USB Digital Multimeter

## Applications

The Model 2100 USB Digital Multimeter is ideal for applications in electronic device, circuit, module, and product testing; low cost production testing of electrical and electronic components, sub-assemblies, and end products; and student lab assignments. Typical applications include:

- Test Engineers: Manual and semi-automatic electrical functional test
- Development Engineers: Electrical/electronic circuit and product validation
- Service/Calibration Technicians: Electronic product repair and calibration
- Research Scientists: Electrical and physics experiments testing
- Engineering Students: Electronic device and circuits experiment testing

## Specifications

### DC CHARACTERISTICS: ACCURACY<sup>1</sup> ±(% of reading + % of range)

Function	Range	Resolution	Input Resistance	1 Year, 23°C ±5°C
DC Voltage	100.0000 mV	0.1 μV	>10 GΩ	0.0055 + 0.0040
	1.000000 V	1.0 μV	>10 GΩ	0.0045 + 0.0008
	10.00000 V	10 μV	>10 GΩ	0.0038 + 0.0006
	100.0000 V	100 μV	10 MΩ	0.0050 + 0.0007
	1000.000 V	1 mV	10 MΩ	0.0055 + 0.0010

Function	Range	Resolution	Shunt Resistance	1 Year
DCI (DC Current)	10.00000 mA	10 nA	5.1 Ω	0.055 + 0.025
	100.0000 mA	100 nA	5.1 Ω	0.055 + 0.006
	1.000000 A	1 μA	0.1 Ω	0.120 + 0.015
	3.00000 A	10 μA	0.1 Ω	0.150 + 0.025

Function	Range	Resolution	Test Current	1 Year
Resistance <sup>2</sup>	100.0000 Ω	100 μΩ	1 mA	0.015 + 0.005
	1.000000 kΩ	1 mΩ	1 mA	0.015 + 0.002
	10.00000 kΩ	10 mΩ	100 μA	0.013 + 0.002
	100.0000 kΩ	100 mΩ	10 μA	0.015 + 0.002
	1.000000 MΩ	1 Ω	5 μA	0.017 + 0.002
	10.00000 MΩ	10 Ω	500 nA	0.045 + 0.002
	100.0000 MΩ	100 Ω	500 nA    10 MΩ	1.00 + 0.020
Diode Test	1.0000 V	10 μV	1 mA	0.040 + 0.020
Continuity	1000.00 kΩ	10 mΩ	1 mA	0.024 + 0.030

### DC NOTES:

- Specifications valid after two hour warm-up.
  - ADC set for continuous trigger operation.
  - Input bias current <30pA at 25°C.
  - Input protection 1000V all ranges (2W input).
  - Measurement rate set to 1 PLC.
- Specifications for 4W ohms mode. For 2W ohms, use zero null or add lead resistance to displayed reading.
  - Maximum lead resistance 10% of range per lead for 100Ω and 1kΩ ranges; add 1kΩ per lead for all other ranges.

### MEASUREMENT NOISE REJECTION DC (60Hz/50Hz)

Rate	Digits	CMRR <sup>1</sup>	NMRR <sup>2</sup>
10PLC	6½	140 dB	60 dB
1PLC	5½	140 dB	60 dB

- For 1kΩ unbalance in LO lead.
- For line frequency ± 0.1%.

### TEMPERATURE (RTD)

Range	Resolution	4-Wire Accuracy <sup>1</sup> , 1 Year
-100°C to +100°C	0.001°C	±0.1°C
-200°C to +630°C	0.001°C	±0.2°C

RTD TYPE: 100Ω platinum (PT100), D100, F100, PT385, or PT3916.

MAXIMUM LEAD RESISTANCE (each lead): 12Ω (to achieve rated accuracy).

SENSOR CURRENT: 1mA (pulsed).

- Excluding probe errors. 23°C ±5°C.

1.888.KEITHLEY (U.S. only)

www.keithley.com

KEITHLEY

A GREATER MEASURE OF CONFIDENCE

# 2100

# 6½-Digit USB Digital Multimeter

## AC CHARACTERISTICS: ACCURACY<sup>1</sup> ±(% of reading + % of range)

Function	Range	Frequency (Hz)	1 Year ±(% of reading) 23°C ±5°C	
Frequency and Period	100 mV to 750 V <sup>2</sup>	3–5	0.10	
		5–40	0.05	
		40–300k	0.01	
Function	Range	Resolution	Frequency (Hz)	1 Year 23°C ±5°C
ACV (AC RMS Voltage)	100.0000 mV	0.1 μV	3–5	1.15 + 0.05
			5–10	0.45 + 0.05
			10–20k	0.08 + 0.05
			20k–50k	0.15 + 0.06
			50k–100k	0.70 + 0.09
			100k–300k	4.25 + 0.60
	1.000000 V to 750.000 V <sup>2</sup>	1.0 μV to 1 mV	3–5	1.10 + 0.04
			5–10	0.4 + 0.04
			10–20k	0.08 + 0.04
			20k–50k	0.14 + 0.06
			50k–100k	0.70 + 0.08
			100k–300k	4.35 + 0.50
ACI (AC RMS Current)	1.000000 A	1 μA	3–5	1.10 + 0.05
			5–10	0.40 + 0.05
			10–5k	0.15 + 0.05
	3.000000 A	10 μA	3–5	1.25 + 0.07
			5–10	0.45 + 0.07
			10–5k	0.20 + 0.07

### AC NOTES:

- Specifications valid for two hour warm-up at 6½ digits.
  - Slow AC filter (3Hz bandwidth).
  - Pure sine wave input greater than 5% of range.
- 750VAC range is limited to 100kHz.

## GENERAL

AC CMRR: 70dB (for 1kΩ unbalance LO lead).  
 POWER SUPPLY: 120V/220V/240V.  
 POWER LINE FREQUENCY: 50/60Hz auto detected.  
 POWER CONSUMPTION: 25VA max.  
 DIGITAL I/O INTERFACE: USB-compatible Type B connection.  
 ENVIRONMENT: For indoor use only.  
 OPERATING TEMPERATURE: 5° to 40°C.  
 OPERATING HUMIDITY: Maximum relative humidity 80% for temperature up to 31°C, decreasing linearly to 50% relative humidity at 40°C.  
 STORAGE TEMPERATURE: –25° to 65°C.  
 OPERATING ALTITUDE: Up to 2000m above sea level.  
 BENCH DIMENSIONS (with handles and feet): 112mm high × 256mm wide × 375mm deep (4.4 in. × 10.1 in. × 14.75 in.).  
 WEIGHT: 4.1kg (9 lbs.).  
 SAFETY: Conforms to European Union Directive 73/23/ECC, EN61010-1.  
 EMC: Conforms to European Union Directive 89/336/EEC, EN61326-1.  
 WARRANTY: One year.



Model 2100 rear panel

1.888.KEITHLEY (U.S. only)

[www.keithley.com](http://www.keithley.com)

**KEITHLEY**

A GREATER MEASURE OF CONFIDENCE

Model 2100 specifications

DIGITAL MULTIMETERS & SYSTEMS

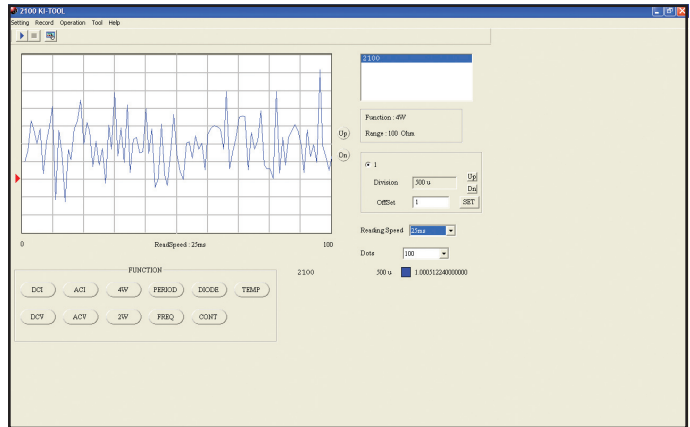
# 2100

# 6½-Digit USB Digital Multimeter

## Startup Software, PC utilities Included

KI-Tool application provides charting and graphing capabilities without programming to simplify setup, checkout, and basic measurement applications requiring graphical data representation. Scale, offset, and level can be adjusted to fine tune images for visual evaluation of signal and noise elements over time. Also includes tabular data and SCPI command prompt windows for maximum flexibility. Data sets can also be saved to disk files.

Microsoft Excel Add-In utility is also included and provides quick data import into standard Microsoft Excel spreadsheet, including selectable graphing, instrument settings, and number of data points collected. Data can then be analyzed through standard or options Microsoft Excel functions, including graphical, statistical, and trend charting. A version supporting Microsoft Word is also included for direct data import into reports.



Specifications are subject to change without notice.  
 All Keithley trademarks and trade names are the property of Keithley Instruments, Inc.  
 All other trademarks and trade names are the property of their respective companies.



A G R E A T E R M E A S U R E O F C O N F I D E N C E

KEITHLEY INSTRUMENTS, INC. ■ 28775 AURORA ROAD ■ CLEVELAND, OHIO 44139-1891 ■ 440-248-0400 ■ Fax: 440-248-6168 ■ 1-888-KEITHLEY ■ www.keithley.com

**BELGIUM**  
 Sint-Pieters-Leeuw  
 Ph: 02-363 00 40  
 Fax: 02-363 00 64  
 www.keithley.nl

**CHINA**  
 Beijing  
 Ph: 8610-82255010  
 Fax: 8610-82255018  
 www.keithley.com.cn

**FINLAND**  
 Espoo  
 Ph: 09-88171661  
 Fax: 09-88171662  
 www.keithley.com

**FRANCE**  
 Saint-Aubin  
 Ph: 01-64 53 20 20  
 Fax: 01-60-11-77-26  
 www.keithley.fr

**GERMANY**  
 Germering  
 Ph: 089-84 93 07-40  
 Fax: 089-84 93 07-34  
 www.keithley.de

**INDIA**  
 Bangalore  
 Ph: 91-80-2677-1071  
 Fax: 91-80-2677-1076  
 www.keithley.com

**ITALY**  
 Milano  
 Ph: 02-553842.1  
 Fax: 02-55384228  
 www.keithley.it

**JAPAN**  
 Tokyo  
 Ph: 81-3-5733-7555  
 Fax: 81-3-5733-7556  
 www.keithley.jp

**KOREA**  
 Seoul  
 Ph: 82-2-574-7778  
 Fax: 82-2-574-7838  
 www.keithley.co.kr

**MALAYSIA**  
 Kuala Lumpur  
 Ph: 60-3-4041-0899  
 Fax: 60-3-4042-0899  
 www.keithley.com

**NETHERLANDS**  
 Gorinchem  
 Ph: 0183-63 53 33  
 Fax: 0183-63 08 21  
 www.keithley.nl

**SINGAPORE**  
 Singapore  
 Ph: 65-6747-9077  
 Fax: 65-6747-2991  
 www.keithley.com.sg

**SWEDEN**  
 Solna  
 Ph: 08-50 90 46 00  
 Fax: 08-655 26 10  
 www.keithley.com

**SWITZERLAND**  
 Zürich  
 Ph: 044-821 94 44  
 Fax: 41-44-820 30 81  
 www.keithley.ch

**TAIWAN**  
 Hsinchu  
 Ph: 886-3-572-9077  
 Fax: 886-3-572-9031  
 www.keithley.com.tw

**UNITED KINGDOM**  
 Theale  
 Ph: 0118-929 75 00  
 Fax: 0118-929 75 19  
 www.keithley.co.uk